



PREVENTION IS BETTER THAN CURE!

Poor lighting is one of the factors that causes eye stress that may aggravate myopia. Industrial standards have long been established that lighting for reading requires a light intensity of at least 300 Lux, and that various tasks have varying requirements to reduce eye stress and thus increase productivity.

HOW TO PREVENT EYE STRESS?

With the use of the EyeCare LITEcheck tester and by placing it on top of the reading material, you can immediately check the light intensity on the reading surface. If the location is dim, move nearer to the light source.

Over exposed light can also cause glare and thus stress the eyes. Therefore the ideal reading location should be between 300 to 500Lux.

One of the easiest ways to improve brightness is to clean the light bulbs whenever the LITEcheck shows a below standard reading.

Trans Instruments' EyeCare LITEcheck tester offers simple yet accurate measurement of light intensity to locate the best area for reading, studying and various tasks.

*** LIGHTING GUIDE INCLUDED**

Simple to use • Direct Reading • Single button operation

TRANS INSTRUMENTS

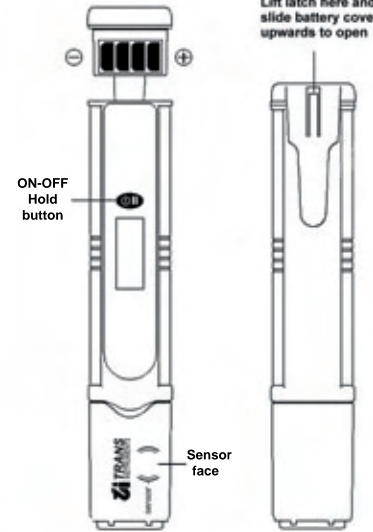


Digital Light Intensity Tester



READ THIS INSTRUCTION SHEET BEFORE USE

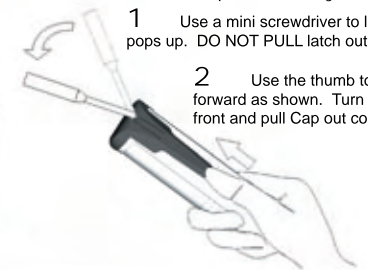
UNDERSTAND YOUR PRODUCT



Installing Battery Cap:
The unit is shipped with the Battery Cap open, close the Battery Cap by pressing Cap on table top till the latch "click" for a secure lock.



How to open Battery Cap:
1 Use a mini screwdriver to lift latch till it pops up. **DO NOT PULL** latch out completely.
2 Use the thumb to push Cap forward as shown. Turn over to the front and pull Cap out completely.



PRECAUTIONS IN HANDLING

Do not store the unit under high temperature or direct sunlight. This will shorten the life span of the unit.



Do not submerge the unit underwater, it cannot come under high pressure underwater and is beyond repair if water gets into the unit.



Do not clean unit with thinner or solvents. This will damage the unit. Use only a damp cloth to clean unit if needed.



SPECIFICATION


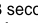


Model	EyeCare LITEcheck
Operating Range	0 to 5,000 Lux
Resolution	10 Lux
Accuracy	±8 % (full scale)
Battery	4 x 1.5V Button Cell (Alkaline A76 or equiv.)
Battery Life	Approximately 150 hours (continuous use)
Weight	Approximately 50gm
Size	180 (L) x 32 (W) x 15 (H) mm




SPECIFICATION

Model	: LITEcheck
Range	: 0 to 50,000 Lux
Resolution	: 100 Lux
Accuracy	: ±8% full scale
Battery	: 4 x 1.5V Button cell (Alkaline A76 or equivalent)
Battery life	: Approx. 150 hours (continuous use)
Auto Shut-off	: Approx. 15 minutes
Operating temperature	: 0° to 50°C
Case Material	: High impact ABS plastic
Size (LxWxH)	: 180 x 32 x 15mm
Weight	: Approx. 50 gm


MAKING MEASUREMENT

1. For general measurement, depress the 'ON-OFF / Hold'  button once to switch on.
2. With the Sensor face directed to the light source perpendicularly, move body away to avoid shadow overcast, wait 3 seconds and press the  Hold button once to freeze or pause the display. Now you can bring the unit in and take a reading.
3. To make another reading, press the  Hold button to release the display and repeat step 2.
4. To avoid inaccurate reading due to shadow overcast, always position the sensor face perpendicularly directed at the light source and away from shadow.
5. To switch off, press and hold the  ON-OFF button for 3 seconds.




1. To measure study table, place the unit on the table or on top of book you are reading, keep still and press the  Hold button and take a reading.
2. For measuring reading lighting, place unit on top of book or reading material. Adjusting distance of lighting will change lighting intensity and is the easiest way to improve brightness.



3. Note that light intensity decreases against distance. Therefore, the further you are from the light source, the lower the light intensity.
4. Insufficient lighting may cause stress to eyes and thus aggravating myopia. For prolong reading and studying, it is better to maintain a brightness of above 300 Lux.
5. See guide to general lighting reference to various lighting requirements.
6. To switch off, press and hold the  Hold button for 3 seconds.

MAINTENANCE

LOW BATTERY ALERT

When the battery symbol  appear on the display, this indicates a low battery and only 2 hours of continuous use remain. Though the unit may continue to function, the accuracy of the unit will be affected beyond the 2 hours.

Change the batteries according to instructions under the section: **UNDERSTAND YOUR PRODUCT.**



In the presence of certain radio transmitters, this product may produce erroneous readings. If this occurs then measurements should be repeated at another location.

GUIDE TO GENERAL LIGHTING (reference only)

	Lux	3,000	2,000	1,000	750	500	300	200	150	100	50	20	10
Home			Sewing of medium-colored fabrics show case & picture			Reading writing painting	Living room Bed room store room		Stair way, corridor				
			Sewing of dark fabrics Hobby craft on fine details	Prolong Reading study work activities		Casual Reading Grooming, Kitchen Laundry area, Child's play room							
School			Drafting Room Laboratory	Class Room Library			Indoor Gymnasium Auditorium, Wash room			Emergency stair way			
Factory		Electronics Assembly Work		Typesetting Print Shop Inspection work		Visual Work at production line		Packing Work		Exit door Entrance door passage		Emergency stair way Loading work	
Office			Drafting	Clerical work		Conference room Reception area			Corridor Stair way				
Retail Shop		Show Window	Show case Packing table			Elevator	Display Stand	Front Desk			Corridor Stair way		
Restaurant			Show case		Kitchen Dinning room			Entrance Wash room		Corridor Stair way			
Barber / Beauty Saloon			Hair Dyeing Make-up Hair Dressing		shaving Hair Washing Hair Dressing								