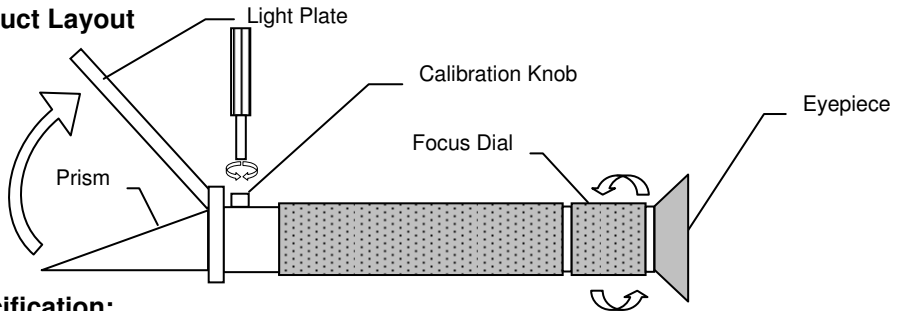


Operation Manual for Hand-held Refractometer

Model RBX4582 / RBX5890

Product Layout



Specification:

Model:	RBX4582	RBX5890
Measuring Range:	45 ~ 82%	58 ~ 90 %
Display Resolution:	0.5%	0.2%

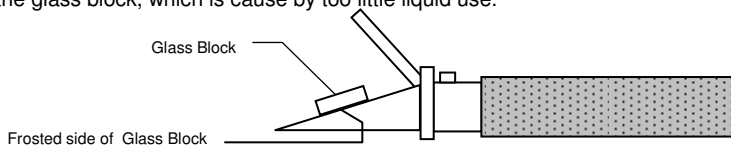
Temperature Compensation: Automatic from 10 to 30degree Celsius.
(ATC model code ending with "A")

Calibration:

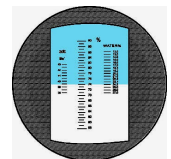
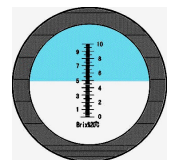
1. Calibration should be made in an ambient environment of 20degree Celsius.
2. Open the **Light Plate** & place a tiny drop of calibration fluid in the center of the prism.

Model	Calibration fluid	Calibration Point
RBX4582	78.8% Sucrose Solution	78.8%
RBX5890	78.8% Sucrose Solution	78.8%

3. Use the provided **Glass Block** and place the frosted side of block on the center of prism where the fluid is. Ensure the water is spread across the entire surface of the **Glass Block**. There must not be any bubbles or dry spots on the glass block, which is cause by too little liquid use.

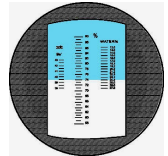
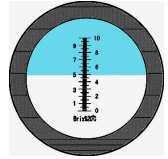


4. Wait for about 30 seconds, this is to allow the temperature compensation to take place.
5. Hold the meter in the direction of light source and look into the **Eyepiece**.
6. Adjust the **Focus Dial** until image is clear and sharp. Each person has his own focusing adjustment.
7. Remove the rubber cap on the **Calibration knob**, with the use of the provided trimming tool and adjust it until the bottom line of the darkest blue section is at the brix scale reads precisely the **Calibration Point above**. Disregard faint or white lines
8. Calibration Completed.
9. Rinse the **Glass Block** and **Prism** with water and wipe them with soft lint-free clothes before proceeding with measurement.



Making Measurement:

1. Open the light plate & place 2 to 3 drops of the test liquid on the prism.
2. Close the Light Plate. Ensure the water is spread across the entire surface of the Prism. There must not be any bubbles or dry spots.
3. Wait for about 30 seconds, this is to allow the temperature compensation to take place.
4. Hold the meter in the direction of light source and look into the Eyepiece.
5. Select the scale, which is the intended unit of measurement.
6. Take the reading from the scale on the line where the darkest blue and white area meets. Disregard faint or white lines
7. Wipe dry the Light Plate and Prism with a soft lint-free clothe after each and every test and before storing away.
8. It is important to maintain the Light Plate and Prism dust and stain free in order to have good repeatability measurement.



Precautions in Usage:

1. Clean the instrument between each measurement and before storage with a soft cloth. Residue of samples stained on the prism could damage the coating on the prism.
2. Do not measure with abrasive or corrosive chemicals. This will damage the prism's coating.
3. Do not immerse the instrument in water. If the view inside the Eyepiece becomes foggy, water has entered into the body. Call a qualified service technician or contact your dealer.
4. Do not clean the prism with thinner as this will remove the special coating on the prism and damage the unit.
5. Do not store the instrument in a damp environment. Store only in a cool and dry environment.
6. This is an optical instrument and requires careful handling and storage. With care, this instrument will provide years of reliable service.

TRANS INSTRUMENTS
for the professionals



A Product of Singapore

www.transinstruments.com